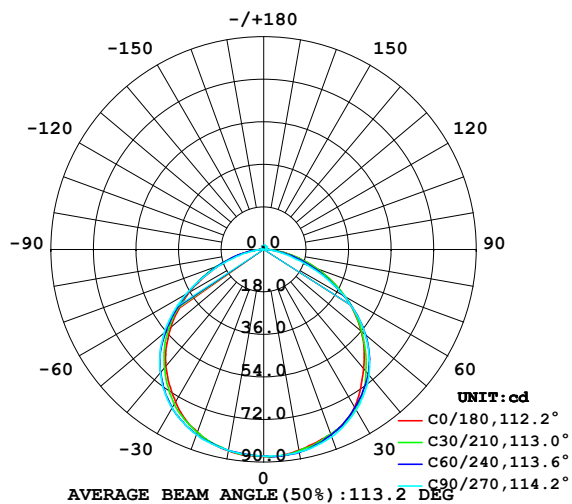


LUMINAIRE PHOTOMETRIC TEST REPORT

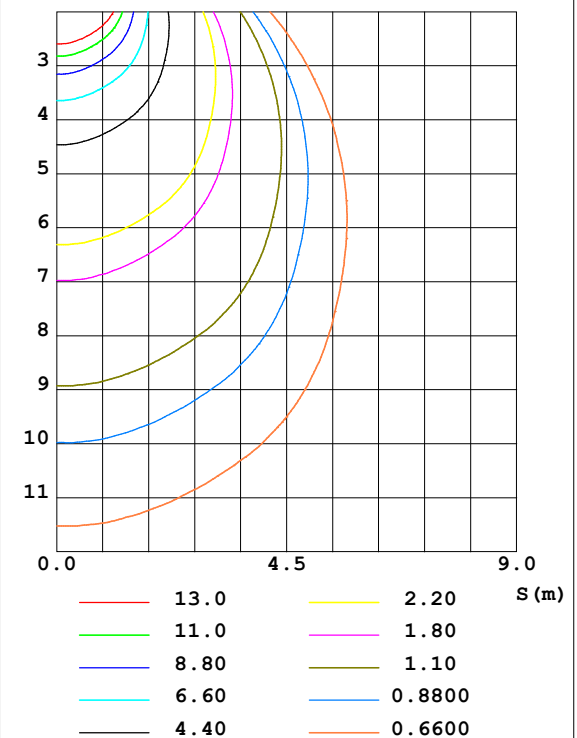
Test:U:24.00V I:0.1670A P:4.008W PF:1.000 Lamp Flux:260.03x1 lm		
NAME: SP01-24V-5050-60-RGBW-2700K-80-G	TYPE: 硅胶	WEIGHT:
DIM.: 15mm*7mm	SPEC.:	SERIAL No.:20221224
MFR.: OLYMPIA	SUR.:1*0.0015	PROTECTION ANGLE:

DATA OF LAMP		PHOTOMETRIC DATA Eff: 64.88 lm/W			
MODEL	5050	I _{max} (cd)	87.76	S/MH (C0/180)	1.29
NOMINAL POWER (W)	17	LOR (%)	100.0	S/MH (C90/270)	1.33
RATED VOLTAGE (V)	24	TOTAL FLUX (lm)	260.03	η UP, DN (C0-180)	1.5, 49.2
NOMINAL FLUX (lm)	260.03	CIE CLASS	DIRECT	η UP, DN (C180-360)	1.1, 48.2
LAMPS INSIDE	1	η up (%)	2.6	CIBSE SHR NOM	1.25
TEST VOLTAGE (V)	24.0	η down (%)	97.4	CIBSE SHR MAX	1.35

LUMINOUS INTENSITY DISTRIBUTION DIAGRAM



C0 PLANE ISOLUX DIAGRAM (UNIT:lx)



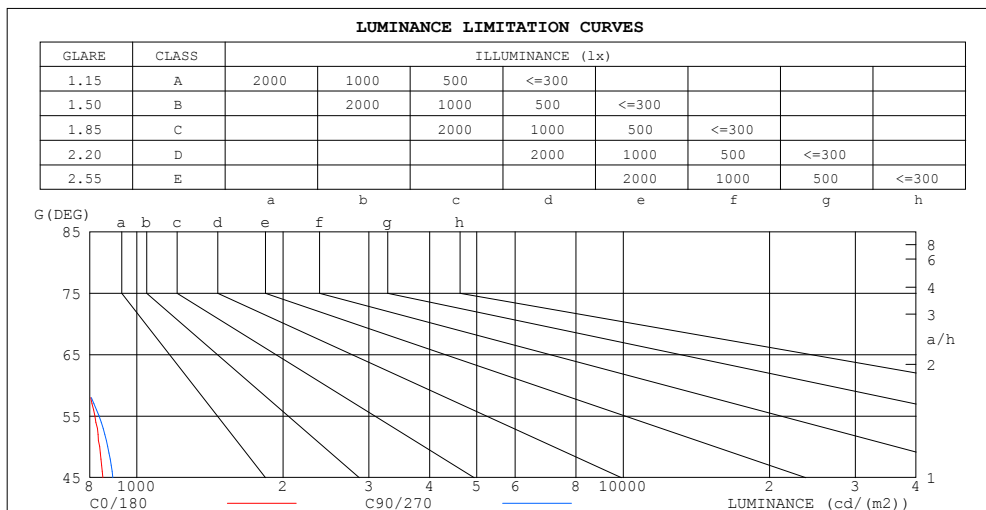
C Range: 0 - 360DEG
C Interval: 30.0DEG
Test Speed: HIGH
Temperature: 25.3DEG
Operators: WFW
Test Date: 2022-12-15

γ Range: 0 - 180DEG
γ Interval: 1.0DEG
Test System: EVERFINE GO-2000B_V1 SYSTEM V2.0.269
Humidity: 65.0%
Test Distance: 10.800m [K=1.0000]
Remarks:

ZONAL FLUX DIAGRAM
AND LUMINANCE LIMITATION CURVES

ZONAL FLUX DIAGRAM:

γ	C0	C45	C90	C135	C180	C225	C270	C315	γ	Φ zone	Φ total	%lum, lamp
10	86.24	86.84	86.98	86.74	86.43	86.37	86.37	86.21	0- 10	8.309	8.309	3.2,3.2
20	83.20	83.32	84.32	83.55	82.20	82.79	83.36	82.46	10- 20	24.05	32.35	12.4,12.4
30	76.92	77.60	78.35	77.38	74.55	76.53	77.51	77.19	20- 30	37.13	69.48	26.7,26.7
40	65.84	68.18	69.28	67.59	64.47	66.58	68.01	67.83	30- 40	45.38	114.9	44.2,44.2
50	53.91	55.32	56.04	54.54	51.39	53.42	55.03	55.21	40- 50	47.26	162.1	62.3,62.3
60	39.63	39.45	39.24	38.28	36.45	37.35	38.04	39.81	50- 60	41.74	203.9	78.4,78.4
70	24.20	23.06	20.15	22.00	20.17	21.21	19.68	23.25	60- 70	29.83	233.7	89.9,89.9
80	9.828	8.991	6.517	8.295	8.147	7.856	6.137	9.041	70- 80	15.50	249.2	95.8,95.8
90	1.333	1.053	0.8589	0.9392	0.6011	0.5928	0.5973	0.8143	80- 90	4.124	253.3	97.4,97.4
100	0.8934	0.9211	0.9836	0.9315	0.5474	0.5749	0.6992	0.5783	90-100	0.8030	254.1	97.7,97.7
110	0.9764	1.060	1.122	1.080	0.7067	0.7203	0.7480	0.6961	100-110	0.8675	255.0	98.1,98.1
120	1.122	1.181	1.240	1.198	0.8729	0.8762	0.8794	0.8415	110-120	0.9480	255.9	98.4,98.4
130	1.253	1.306	1.358	1.309	1.039	1.022	0.9903	0.9974	120-130	0.9787	256.9	98.8,98.8
140	1.371	1.403	1.455	1.420	1.226	1.195	1.163	1.184	130-140	0.9510	257.9	99.2,99.2
150	1.510	1.510	1.552	1.537	1.392	1.385	1.316	1.337	140-150	0.8568	258.7	99.5,99.5
160	1.558	1.596	1.655	1.638	1.558	1.531	1.496	1.499	150-160	0.6937	259.4	99.8,99.8
170	1.641	1.676	1.731	1.690	1.683	1.652	1.614	1.634	160-170	0.4573	259.9	99.9,99.9
180	1.731	1.738	1.738	1.718	1.731	1.735	1.731	1.711	170-180	0.1608	260.0	100,100
DEG	LUMINOUS INTENSITY:cd									UNIT:lm		



LUMINANCE cd/(m2)		
G (DEG)	C0/180	C90/270
85	490	306
80	566	375
75	650	462
70	708	589
65	754	705
60	793	785
55	820	837
50	839	872
45	852	893

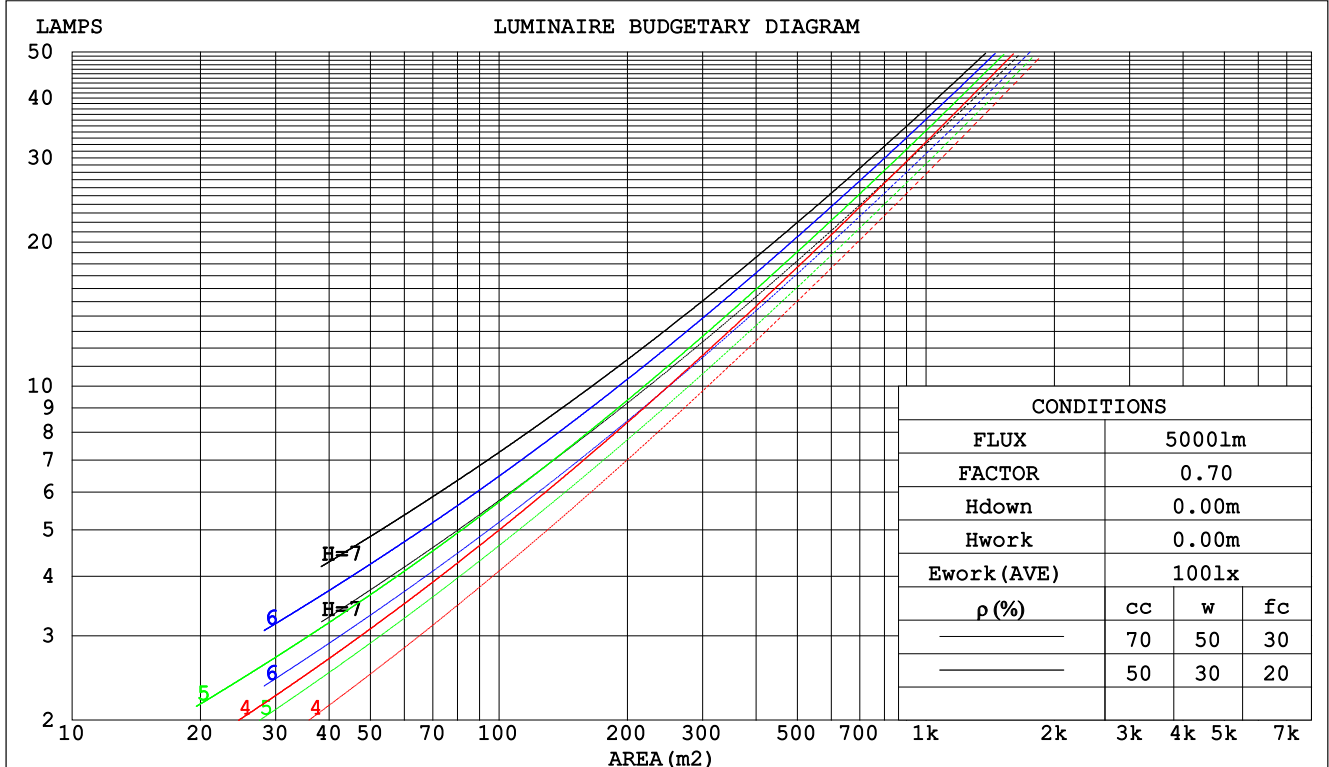
C Range: 0 - 360DEG
C Interval: 30.0DEG
Test Speed: HIGH
Temperature:25.3DEG
Operators:WFW
Test Date:2022-12-15

γ Range: 0 - 180DEG
 γ Interval: 1.0DEG
Test System:EVERFINE GO-2000B_V1 SYSTEM V2.0.269
Humidity:65.0%
Test Distance:10.800m [K=1.0000]
Remarks:

CU AND LUMINAIRE BUDGETARY ESTIMATE DIAGRAM

Test:U:24.00V I:0.1670A P:4.008W PF:1.000 Lamp Flux:260.03x1 lm		
NAME: SP01-24V-5050-60-RGBW-2700K-80-G	TYPE: 硅胶	WEIGHT:
DIM.: 15mm*7mm	SPEC.:	SERIAL No.:20221224
MFR.: OLYMPIA	SUR.:1*0.0015	PROTECTION ANGLE:

ρ_{cc}	80%			70%			50%			30%			10%			0
ρ_w	50%	30%	10%	50%	30%	10%	50%	30%	10%	50%	30%	10%	50%	30%	10%	0
ρ_{fc}	20%			20%			20%			20%			20%			0
RCR	RCR:Room Cavity Ratio						Coefficients of Utilization(CU)									
0.0	1.18	1.18	1.18	1.15	1.15	1.15	1.10	1.10	1.10	1.04	1.04	1.04	.00	.00	.00	.97
1.0	1.04	.00	.96	1.01	.97	.94	.96	.93	.91	.92	.90	.87	.88	.86	.84	.82
2.0	.91	.84	.78	.88	.82	.77	.84	.79	.75	.81	.77	.73	.77	.74	.71	.69
3.0	.80	.71	.65	.78	.70	.64	.74	.68	.63	.71	.66	.61	.68	.64	.60	.58
4.0	.70	.62	.55	.69	.61	.55	.66	.59	.54	.64	.57	.53	.61	.56	.52	.49
5.0	.63	.54	.47	.62	.53	.47	.59	.52	.46	.57	.51	.46	.55	.49	.45	.43
6.0	.57	.48	.41	.56	.47	.41	.53	.46	.40	.52	.45	.40	.50	.44	.39	.37
7.0	.51	.43	.36	.50	.42	.36	.49	.41	.36	.47	.40	.35	.45	.39	.35	.33
8.0	.47	.38	.32	.46	.38	.32	.44	.37	.32	.43	.36	.32	.42	.36	.31	.29
9.0	.43	.35	.29	.42	.34	.29	.41	.34	.29	.40	.33	.28	.38	.32	.28	.26
10.0	.39	.32	.26	.39	.31	.26	.38	.31	.26	.37	.30	.26	.36	.30	.26	.24



C Range: 0 - 360DEG
C Interval: 30.0DEG
Test Speed: HIGH
Temperature:25.3DEG
Operators:WFW
Test Date:2022-12-15

γ Range: 0 - 180DEG
 γ Interval: 1.0DEG
Test System:EVERFINE GO-2000B_V1 SYSTEM V2.0.269
Humidity:65.0%
Test Distance:10.800m [K=1.0000]
Remarks:

WEC AND CCEC

Test:U:24.00V I:0.1670A P:4.008W PF:1.000 Lamp Flux:260.03x1 lm		
NAME: SP01-24V-5050-60-RGBW-2700K-80-G	TYPE: 硅胶	WEIGHT:
DIM.: 15mm*7mm	SPEC.:	SERIAL No.:20221224
MFR.: OLYMPIA	SUR.:1*0.0015	PROTECTION ANGLE:

pcc	80%			70%			50%			30%			10%			0	
pw	50%	30%	10%	50%	30%	10%	50%	30%	10%	50%	30%	10%	50%	30%	10%	0	
pfc	20%			20%			20%			20%			20%			0	
RCR	RCR:Room Cavity Ratio						Wall Exitance Coefficients(WEC)										
0.0																	
1.0	.301	.171	.054	.293	.167	.053	.278	.160	.051	.265	.153	.049	.252	.146	.047		
2.0	.285	.156	.048	.278	.153	.047	.265	.147	.046	.253	.142	.044	.242	.137	.043		
3.0	.265	.141	.042	.259	.139	.042	.247	.134	.041	.236	.130	.040	.226	.125	.039		
4.0	.245	.127	.037	.240	.125	.037	.229	.122	.036	.220	.118	.036	.211	.115	.035		
5.0	.227	.116	.034	.222	.114	.033	.213	.111	.033	.205	.108	.032	.197	.105	.032		
6.0	.211	.106	.030	.207	.104	.030	.199	.102	.030	.191	.099	.029	.184	.097	.029		
7.0	.197	.097	.028	.193	.096	.027	.186	.094	.027	.179	.092	.027	.172	.089	.026		
8.0	.184	.090	.025	.181	.089	.025	.174	.087	.025	.168	.085	.024	.162	.083	.024		
9.0	.173	.084	.023	.169	.083	.023	.163	.081	.023	.158	.079	.023	.152	.077	.022		
10.0	.162	.078	.022	.160	.077	.022	.154	.075	.021	.149	.074	.021	.144	.072	.021		

pcc	80%			70%			50%			30%			10%			0
pw	50%	30%	10%	50%	30%	10%	50%	30%	10%	50%	30%	10%	50%	30%	10%	0
pfc	20%			20%			20%			20%			20%			0
RCR	RCR:Room Cavity Ratio			Ceiling Cavity Exitance Coefficients(CCEC)												
0.0	.210	.210	.210	.180	.180	.180	.123	.123	.123	.070	.070	.070	.023	.023	.023	
1.0	.200	.176	.155	.171	.151	.133	.117	.104	.092	.067	.060	.054	.022	.019	.017	
2.0	.191	.152	.119	.164	.131	.103	.112	.090	.072	.065	.053	.042	.021	.017	.014	
3.0	.184	.134	.095	.157	.116	.082	.108	.081	.058	.062	.047	.034	.020	.015	.011	
4.0	.176	.121	.079	.151	.105	.069	.104	.073	.048	.060	.043	.029	.019	.014	.009	
5.0	.169	.111	.068	.145	.096	.059	.100	.067	.042	.058	.039	.025	.019	.013	.008	
6.0	.162	.102	.060	.139	.089	.052	.096	.062	.037	.056	.037	.022	.018	.012	.007	
7.0	.155	.096	.054	.133	.083	.047	.092	.058	.033	.054	.034	.020	.017	.011	.007	
8.0	.149	.090	.049	.128	.078	.043	.089	.055	.030	.052	.032	.018	.017	.011	.006	
9.0	.143	.085	.046	.123	.074	.040	.085	.052	.028	.050	.031	.017	.016	.010	.006	
10.0	.137	.081	.043	.118	.070	.038	.082	.049	.027	.048	.029	.016	.016	.010	.005	

C Range: 0 - 360DEG
 C Interval: 30.0DEG
 Test Speed: HIGH
 Temperature:25.3DEG
 Operators:WFW
 Test Date:2022-12-15

γ Range: 0 - 180DEG
 γ Interval: 1.0DEG
 Test System:EVERFINE GO-2000B_V1 SYSTEM V2.0.269
 Humidity:65.0%
 Test Distance:10.800m [K=1.0000]
 Remarks:

Uncorrected UGR Table

Test:U:24.00V I:0.1670A P:4.008W PF:1.000 Lamp Flux:260.03x1 lm											
NAME: SP01-24V-5050-60-RGBW-2700K-80-G						TYPE:硅胶		WEIGHT:			
DIM.: 15mm*7mm						SPEC.:		SERIAL No.:20221224			
MFR.: OLYMPIA						SUR.:1*0.0015		PROTECTION ANGLE:			
ceiling/cavity	0.7	0.7	0.5	0.5	0.3	0.7	0.7	0.5	0.5	0.3	
walls	0.5	0.3	0.5	0.3	0.3	0.5	0.3	0.5	0.3	0.3	
working plane	0.2	0.2	0.2	0.2	0.2	0.2	0.2	0.2	0.2	0.2	
Room dimensions	Viewed crosswise					Viewed endwise					
x = 2H y = 2H	12.1	13.6	12.5	13.9	14.1	12.2	13.6	12.5	13.9	14.1	
	3H	13.6	14.9	13.9	15.2	15.5	13.3	14.7	13.7	15.0	15.2
	4H	14.2	15.4	14.5	15.7	16.0	13.7	14.9	14.0	15.2	15.6
	6H	14.5	15.7	14.9	16.1	16.4	13.8	15.1	14.2	15.4	15.7
	8H	14.7	15.8	15.0	16.1	16.5	13.9	15.0	14.3	15.4	15.7
	12H	14.7	15.8	15.1	16.2	16.5	13.9	15.0	14.3	15.3	15.7
4H	2H	12.7	14.0	13.1	14.3	14.6	12.7	14.0	13.1	14.3	14.6
	3H	14.3	15.5	14.7	15.8	16.2	14.0	15.2	14.4	15.5	15.9
	4H	15.0	16.0	15.4	16.4	16.8	14.5	15.5	14.9	15.9	16.3
	6H	15.5	16.4	16.0	16.8	17.2	14.8	15.7	15.2	16.1	16.5
	8H	15.7	16.5	16.1	16.9	17.4	14.9	15.7	15.3	16.1	16.6
	12H	15.8	16.6	16.3	17.0	17.5	14.9	15.7	15.4	16.1	16.6
8H	4H	15.2	16.0	15.7	16.5	16.9	14.8	15.6	15.2	16.0	16.4
	6H	15.9	16.5	16.3	17.0	17.5	15.2	15.9	15.7	16.3	16.8
	8H	16.1	16.7	16.6	17.2	17.7	15.3	15.9	15.8	16.4	16.9
	12H	16.3	16.8	16.8	17.3	17.8	15.4	15.9	15.9	16.4	17.0
12H	4H	15.2	16.0	15.7	16.4	16.9	14.8	15.5	15.2	16.0	16.4
	6H	15.9	16.5	16.4	17.0	17.5	15.2	15.8	15.7	16.3	16.8
	8H	16.2	16.7	16.7	17.2	17.7	15.4	15.9	15.9	16.4	17.0
Variations with the observer position at spacings:											
S = 1.0H	+ 0.2 / - 0.2					+ 0.2 / - 0.3					
1.5H	+ 0.2 / - 0.3					+ 0.2 / - 0.4					
2.0H	+ 0.2 / - 0.3					+ 0.3 / - 0.3					

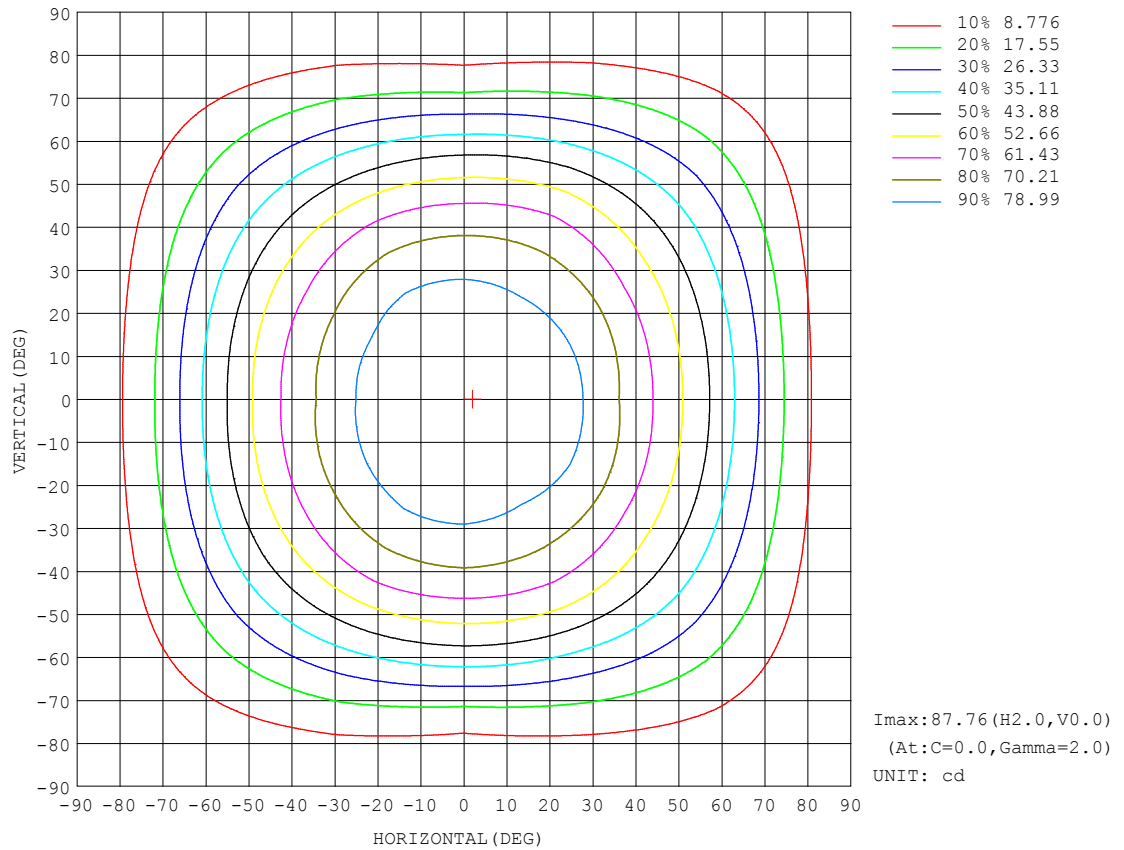
CIE Pub.117 Corrected 260.0 lm Total Lamp Luminous Flux. (8log(F/F0) = -4.7)

C Range: 0 - 360DEG
C Interval: 30.0DEG
Test Speed: HIGH
Temperature:25.3DEG
Operators:WFW
Test Date:2022-12-15

γ Range: 0 - 180DEG
γ Interval: 1.0DEG
Test System:EVERFINE GO-2000B_V1 SYSTEM V2.0.269
Humidity:65.0%
Test Distance:10.800m [K=1.0000]
Remarks:

ISOCANDELA DIAGRAM

Test:U:24.00V I:0.1670A P:4.008W PF:1.000 Lamp Flux:260.03x1 lm		
NAME: SP01-24V-5050-60-RGBW-2700K-80-G	TYPE: 硅胶	WEIGHT:
DIM.: 15mm*7mm	SPEC.:	SERIAL No.:20221224
MFR.: OLYMPIA	SUR.:1*0.0015	PROTECTION ANGLE:

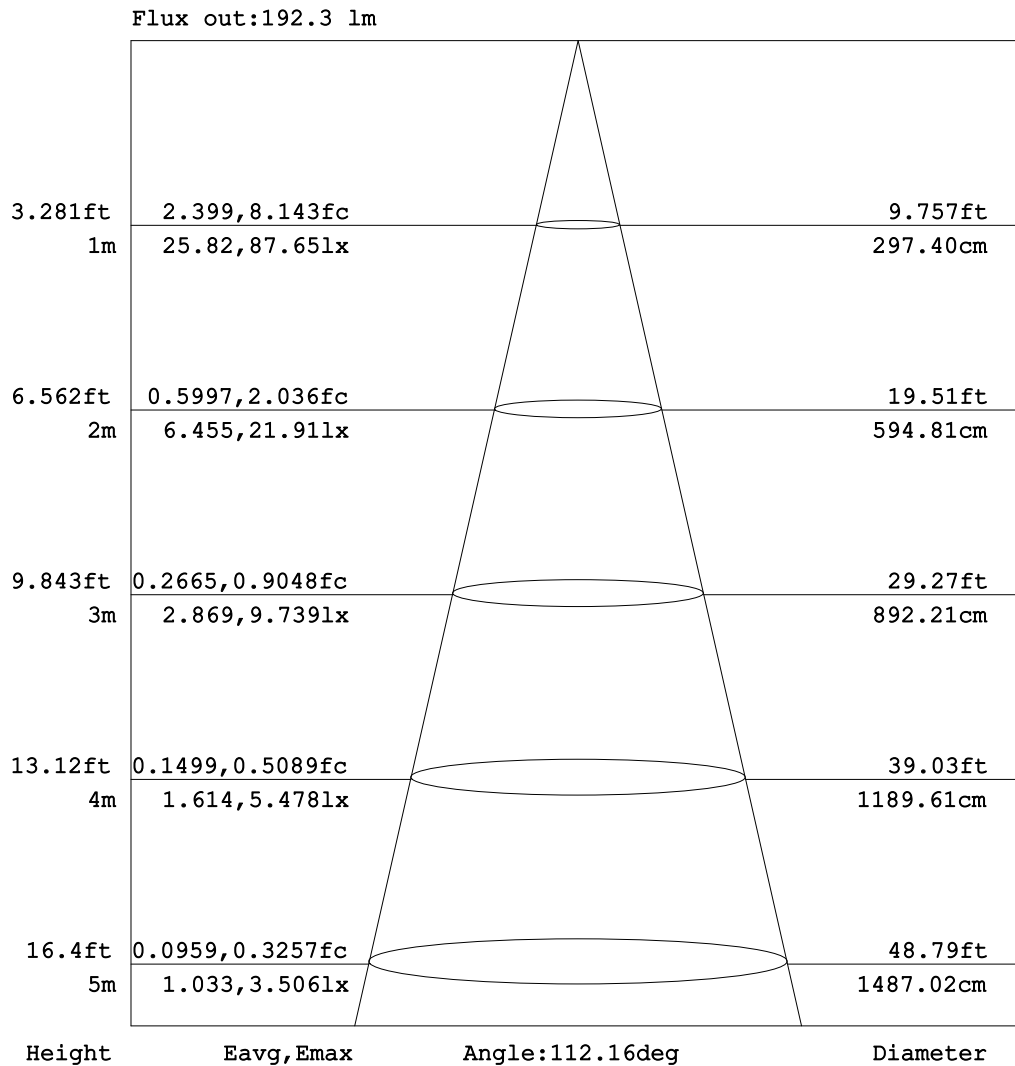


C Range: 0 - 360DEG
C Interval: 30.0DEG
Test Speed: HIGH
Temperature:25.3DEG
Operators:WFW
Test Date:2022-12-15

γ Range: 0 - 180DEG
 γ Interval: 1.0DEG
Test System:EVERFINE GO-2000B_V1 SYSTEM V2.0.269
Humidity:65.0%
Test Distance:10.800m [K=1.0000]
Remarks:

AAI Figure

Test:U:24.00V I:0.1670A P:4.008W PF:1.000 Lamp Flux:260.03x1 lm		
NAME: SP01-24V-5050-60-RGBW-2700K-80-G	TYPE: 硅胶	WEIGHT:
DIM.: 15mm*7mm	SPEC.:	SERIAL No.:20221224
MFR.: OLYMPIA	SUR.:1*0.0015	PROTECTION ANGLE:



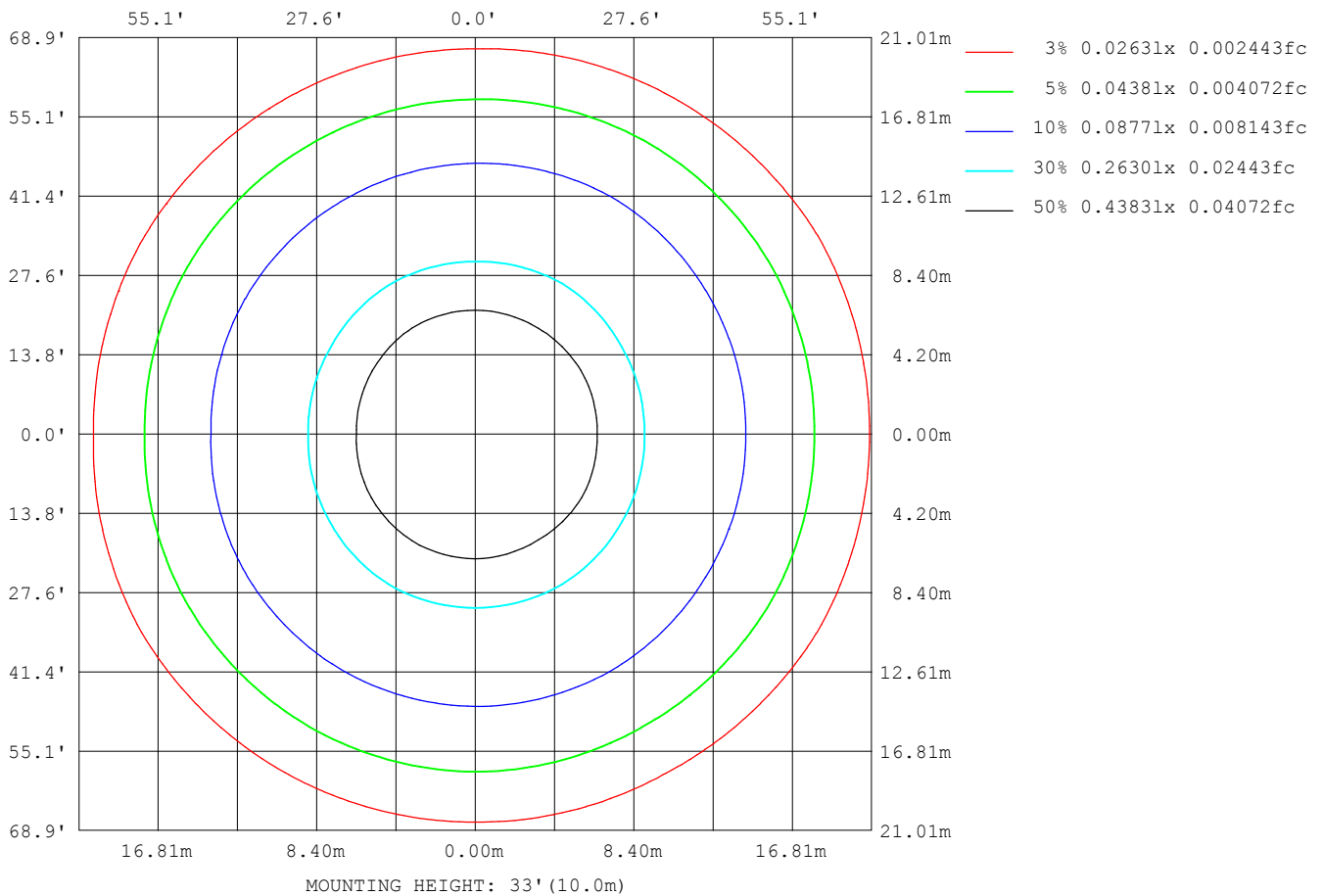
Note: The Curves indicate the illuminated area and the average illumination when the luminaire is at different distance.

C Range: 0 - 360DEG
C Interval: 30.0DEG
Test Speed: HIGH
Temperature:25.3DEG
Operators:WFW
Test Date:2022-12-15

γ Range: 0 - 180DEG
γ Interval: 1.0DEG
Test System:EVERFINE GO-2000B_V1 SYSTEM V2.0.269
Humidity:65.0%
Test Distance:10.800m [K=1.0000]
Remarks:

ISOLUX DIAGRAM

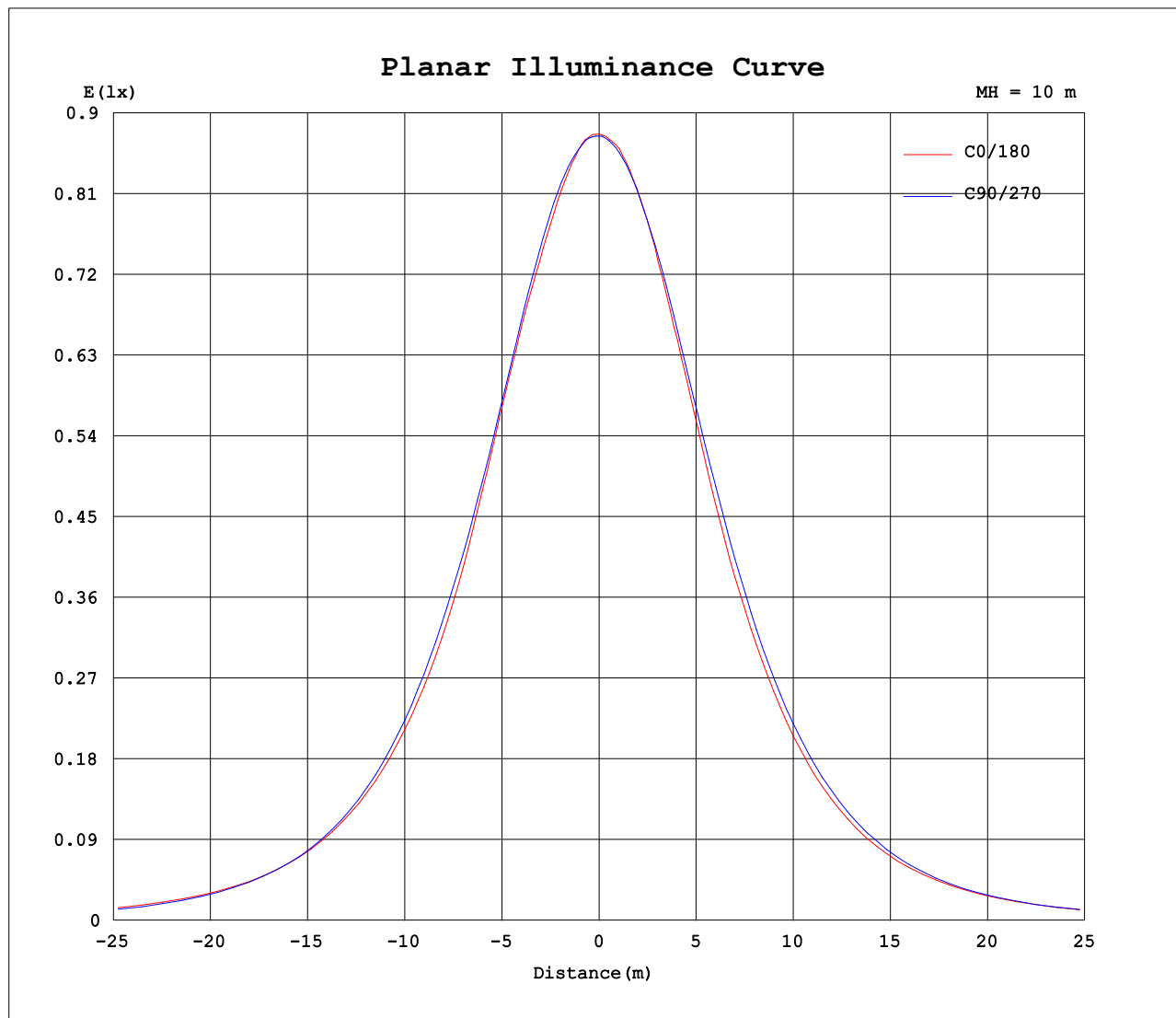
Test:U:24.00V I:0.1670A P:4.008W PF:1.000 Lamp Flux:260.03x1 lm		
NAME: SP01-24V-5050-60-RGBW-2700K-80-G	TYPE: 硅胶	WEIGHT:
DIM.: 15mm*7mm	SPEC.:	SERIAL No.:20221224
MFR.: OLYMPIA	SUR.:1*0.0015	PROTECTION ANGLE:



C Range: 0 - 360DEG
C Interval: 30.0DEG
Test Speed: HIGH
Temperature:25.3DEG
Operators:WFW
Test Date:2022-12-15

γ Range: 0 - 180DEG
 γ Interval: 1.0DEG
Test System:EVERFINE GO-2000B_V1 SYSTEM V2.0.269
Humidity:65.0%
Test Distance:10.800m [K=1.0000]
Remarks:

Planar Illuminance Curve



C Range: 0 - 360DEG
C Interval: 30.0DEG
Test Speed: HIGH
Temperature: 25.3DEG
Operators: WFW
Test Date: 2022-12-15

γ Range: 0 - 180DEG
 γ Interval: 1.0DEG
Test System: EVERFINE GO-2000B_V1 SYSTEM V2.0.269
Humidity: 65.0%
Test Distance: 10.800m [K=1.0000]
Remarks:

LUMINOUS DISTRIBUTION INTENSITY DATA

Test:U:24.00V I:0.1670A P:4.008W PF:1.000 Lamp Flux:260.03x1 lm											
NAME: SP01-24V-5050-60-RGBW-2700K-80-G						TYPE: 硅胶			WEIGHT:		
DIM.: 15mm*7mm						SPEC.:			SERIAL No.:20221224		
MFR.: OLYMPIA						SUR.:1*0.0015			PROTECTION ANGLE:		

Table--1

UNIT: cd

C (DEG) γ (DEG)	0	30	60	90	120	150	180	210	240	270	300	330								
0	87.7	87.5	87.4	87.4	87.4	87.4	87.7	87.5	87.4	87.4	87.4	87.4								
5	87.6	87.6	87.7	87.4	87.3	87.2	87.4	87.2	87.0	87.1	87.2	87.1								
10	86.2	86.5	87.2	87.0	86.9	86.5	86.4	86.3	86.4	86.4	86.5	86.0								
15	84.7	85.1	85.6	86.0	85.7	85.3	84.9	84.7	84.9	85.1	84.9	84.2								
20	83.2	83.1	83.5	84.3	84.0	83.1	82.2	82.4	83.2	83.4	82.8	82.1								
25	80.9	81.3	80.7	81.7	81.4	80.2	79.1	79.4	80.7	80.7	80.2	80.4								
30	76.9	78.0	77.2	78.4	78.2	76.5	74.5	75.6	77.5	77.5	77.0	77.4								
35	71.5	73.4	73.2	74.3	73.7	71.7	69.6	70.7	73.1	73.3	73.0	72.7								
40	65.8	67.4	69.0	69.3	68.9	66.3	64.5	65.3	67.9	68.0	68.6	67.0								
45	60.2	60.9	63.3	63.1	63.1	60.4	58.2	59.4	61.9	62.1	63.4	60.6								
50	53.9	54.2	56.4	56.0	55.7	53.4	51.4	52.6	54.2	55.0	56.3	54.1								
55	47.0	47.3	48.3	48.0	47.3	46.0	43.9	45.1	45.8	47.0	48.5	47.4								
60	39.6	39.8	39.1	39.2	38.6	37.9	36.5	37.3	37.4	38.0	39.5	40.1								
65	31.8	32.1	30.2	29.8	30.0	30.1	28.1	29.4	29.1	28.7	30.3	32.3								
70	24.2	24.1	22.0	20.2	22.0	22.0	20.2	21.3	21.1	19.7	22.1	24.4								
75	16.8	16.5	14.7	12.0	14.5	14.5	13.8	13.8	14.0	12.0	14.8	16.6								
80	9.83	9.72	8.26	6.52	8.30	8.29	8.15	7.80	7.91	6.14	8.48	9.60								
85	4.27	4.04	3.33	2.67	3.42	3.57	3.35	3.19	3.21	2.50	3.43	3.99								
90	1.33	1.14	0.96	0.86	0.94	0.94	0.60	0.65	0.54	0.60	0.66	0.97								
95	0.90	0.89	0.88	0.92	0.88	0.89	0.47	0.49	0.56	0.58	0.57	0.53								
100	0.89	0.93	0.91	0.98	0.90	0.96	0.55	0.51	0.64	0.70	0.63	0.53								
105	0.90	0.99	0.96	1.05	0.96	1.03	0.62	0.59	0.71	0.75	0.69	0.55								
110	0.98	1.07	1.05	1.12	1.07	1.09	0.71	0.66	0.78	0.75	0.76	0.63								
115	1.05	1.14	1.09	1.18	1.09	1.16	0.78	0.73	0.86	0.82	0.84	0.72								
120	1.12	1.20	1.16	1.24	1.16	1.23	0.87	0.83	0.92	0.88	0.90	0.78								
125	1.18	1.26	1.22	1.28	1.23	1.29	0.96	0.89	0.99	0.94	0.98	0.86								
130	1.25	1.32	1.30	1.36	1.27	1.34	1.04	0.97	1.07	0.99	1.05	0.94								
135	1.31	1.38	1.32	1.41	1.33	1.41	1.13	1.08	1.15	1.09	1.14	1.05								
140	1.37	1.43	1.38	1.45	1.39	1.45	1.23	1.16	1.23	1.16	1.21	1.16								
145	1.41	1.48	1.41	1.50	1.44	1.51	1.32	1.26	1.33	1.25	1.29	1.20								
150	1.51	1.53	1.49	1.55	1.51	1.57	1.39	1.36	1.41	1.32	1.38	1.29								
155	1.51	1.58	1.51	1.61	1.54	1.61	1.48	1.41	1.50	1.40	1.47	1.39								
160	1.56	1.63	1.56	1.66	1.62	1.66	1.56	1.50	1.57	1.50	1.55	1.45								
165	1.61	1.68	1.60	1.69	1.62	1.69	1.63	1.55	1.63	1.54	1.62	1.52								
170	1.64	1.71	1.64	1.73	1.65	1.73	1.68	1.62	1.68	1.61	1.67	1.60								
175	1.71	1.73	1.68	1.74	1.70	1.72	1.72	1.64	1.73	1.65	1.72	1.63								
180	1.73	1.75	1.73	1.74	1.71	1.72	1.73	1.72	1.75	1.73	1.74	1.68								

C Range: 0 - 360DEG
 C Interval: 30.0DEG
 Test Speed: HIGH
 Temperature:25.3DEG
 Operators:WFW
 Test Date:2022-12-15

γ Range: 0 - 180DEG
 γ Interval: 1.0DEG
 Test System:EVERFINE GO-2000B_V1 SYSTEM V2.0.269
 Humidity:65.0%
 Test Distance:10.800m [K=1.0000]
 Remarks:

Photometric Data Table [cd]

G/C	0.0	30.0	60.0	90.0	120.0	150.0	180.0	210.0	240.0	270.0
0.0	87.65	87.55	87.43	87.43	87.41	87.35	87.65	87.55	87.43	87.43
3.0	87.66	87.67	87.73	87.54	87.46	87.18	87.45	87.31	87.20	87.27
6.0	87.32	87.49	87.48	87.38	87.18	87.15	87.46	87.20	86.83	86.98
9.0	86.51	86.76	87.39	87.19	86.96	86.68	86.81	86.50	86.50	86.55
12.0	85.69	85.84	86.71	86.67	86.66	85.99	85.93	85.58	85.86	85.84
15.0	84.73	85.10	85.61	86.00	85.74	85.27	84.95	84.68	84.89	85.11
18.0	83.76	83.81	84.34	84.99	84.87	84.16	83.42	83.47	84.21	84.28
21.0	82.92	82.76	83.05	83.91	83.59	82.55	81.47	81.89	82.83	82.95
24.0	81.43	81.88	81.52	82.27	81.96	80.68	79.81	79.94	81.34	81.33
27.0	79.54	80.13	79.46	80.46	79.99	78.81	77.45	78.10	79.59	79.62
30.0	76.92	78.03	77.17	78.35	78.21	76.54	74.55	75.62	77.45	77.51
33.0	73.85	75.51	74.89	76.00	75.61	73.71	71.58	72.86	74.87	75.16
36.0	70.28	72.42	72.33	73.39	72.90	70.73	68.70	69.83	72.19	72.42
39.0	66.92	68.72	69.87	70.44	69.79	67.39	65.44	66.44	68.93	69.10
42.0	63.64	64.87	66.74	67.02	66.72	64.07	62.21	63.10	65.69	65.85
45.0	60.21	60.92	63.29	63.12	63.13	60.38	58.21	59.41	61.85	62.08
48.0	56.46	56.90	59.24	59.02	58.87	56.55	54.14	55.51	57.26	57.90
51.0	52.50	52.88	54.85	54.53	53.83	51.90	50.05	51.16	52.46	53.52
54.0	48.46	48.69	49.97	49.72	48.95	47.51	45.37	46.82	47.57	48.64
57.0	44.09	44.38	44.61	44.50	43.87	43.04	40.81	41.73	42.54	43.43
60.0	39.63	39.84	39.06	39.24	38.64	37.92	36.45	37.27	37.43	38.04
63.0	35.01	35.19	33.70	33.56	33.41	33.18	31.44	32.34	32.25	32.42
66.0	30.38	30.47	28.48	27.87	28.34	28.42	26.44	27.67	27.35	26.78
69.0	25.72	25.69	23.69	21.98	23.65	23.57	21.66	22.96	22.58	21.51
72.0	21.20	20.95	18.99	16.52	18.89	18.78	17.40	18.22	18.07	16.43
75.0	16.81	16.50	14.69	11.95	14.53	14.55	13.76	13.82	14.02	11.95
78.0	12.53	12.27	10.65	8.434	10.60	10.57	10.36	10.10	10.22	8.307
81.0	8.573	8.473	7.125	5.657	7.187	7.187	7.129	6.795	6.852	5.284
84.0	5.228	4.978	4.181	3.263	4.243	4.397	4.248	3.998	4.014	3.047
87.0	2.620	2.475	1.947	1.694	2.071	2.108	1.823	1.745	1.850	1.563
90.0	1.333	1.141	0.9644	0.8589	0.9370	0.9414	0.6011	0.6456	0.5401	0.5973
93.0	0.9563	0.8865	0.8797	0.9004	0.8796	0.8727	0.4641	0.4918	0.5405	0.5818
96.0	0.8867	0.8934	0.8796	0.9351	0.8796	0.9006	0.4920	0.4986	0.5819	0.6023
99.0	0.8934	0.9212	0.8864	0.9697	0.8864	0.9489	0.5334	0.5056	0.6304	0.6576
102.0	0.8934	0.9558	0.9419	1.004	0.9279	0.9905	0.5819	0.5193	0.6719	0.7549
105.0	0.9003	0.9906	0.9626	1.053	0.9556	1.025	0.6235	0.5885	0.7067	0.7549
108.0	0.9418	1.039	1.004	1.088	1.011	1.067	0.6788	0.6163	0.7413	0.7480
111.0	0.9834	1.074	1.046	1.129	1.060	1.108	0.7273	0.6992	0.8035	0.7480
114.0	1.053	1.129	1.087	1.171	1.073	1.150	0.7689	0.7203	0.8314	0.7756
117.0	1.080	1.164	1.136	1.205	1.129	1.191	0.8243	0.7548	0.8797	0.8311
120.0	1.122	1.198	1.164	1.240	1.164	1.233	0.8729	0.8310	0.9213	0.8794
123.0	1.164	1.240	1.191	1.281	1.191	1.261	0.9145	0.8518	0.9697	0.9141
126.0	1.198	1.274	1.240	1.281	1.253	1.302	0.9699	0.9140	1.018	0.9488
129.0	1.233	1.309	1.295	1.344	1.274	1.344	1.018	0.9625	1.053	0.9834
132.0	1.274	1.344	1.295	1.378	1.295	1.371	1.081	1.025	1.101	1.053
135.0	1.309	1.378	1.316	1.406	1.330	1.406	1.129	1.080	1.150	1.094
138.0	1.330	1.406	1.337	1.448	1.392	1.441	1.185	1.129	1.198	1.129
141.0	1.385	1.441	1.378	1.468	1.392	1.468	1.233	1.170	1.254	1.164
144.0	1.406	1.468	1.406	1.489	1.427	1.503	1.295	1.226	1.302	1.212
147.0	1.427	1.496	1.427	1.524	1.482	1.531	1.344	1.267	1.358	1.274
150.0	1.510	1.531	1.489	1.552	1.510	1.565	1.392	1.357	1.413	1.316
153.0	1.510	1.565	1.496	1.593	1.517	1.600	1.441	1.378	1.455	1.385
156.0	1.517	1.586	1.524	1.614	1.565	1.621	1.496	1.420	1.510	1.420
159.0	1.565	1.621	1.551	1.648	1.627	1.648	1.538	1.503	1.558	1.503
162.0	1.593	1.648	1.600	1.669	1.621	1.676	1.586	1.510	1.593	1.510
165.0	1.607	1.676	1.600	1.690	1.621	1.690	1.628	1.551	1.635	1.544
168.0	1.634	1.704	1.627	1.718	1.634	1.718	1.662	1.621	1.669	1.607
171.0	1.648	1.711	1.641	1.732	1.655	1.725	1.690	1.621	1.690	1.614
174.0	1.697	1.731	1.676	1.738	1.697	1.725	1.718	1.634	1.711	1.641
177.0	1.718	1.738	1.683	1.738	1.704	1.725	1.725	1.655	1.738	1.662
180.0	1.731	1.745	1.731	1.738	1.711	1.725	1.731	1.725	1.745	1.731
G/C	300.0	330.0								
0.0	87.41	87.35								
3.0	87.46	87.29								
6.0	87.03	87.03								
9.0	86.69	86.24								
12.0	85.88	85.24								
15.0	84.89	84.24								
18.0	83.69	83.05								
21.0	82.38	81.78								
24.0	80.72	80.87								
27.0	79.00	79.16								
30.0	76.97	77.41								

C Range: 0 - 360DEG
 C Interval: 30.0DEG
 Test Speed: HIGH
 Temperature: 25.3DEG
 Operators: WFW
 Test Date: 2022-12-15

γ Range: 0 - 180DEG
 γ Interval: 1.0DEG
 Test System: EVERFINE GO-2000B_V1 SYSTEM V2.0.269
 Humidity: 65.0%
 Test Distance: 10.800m [K=1.0000]
 Remarks:

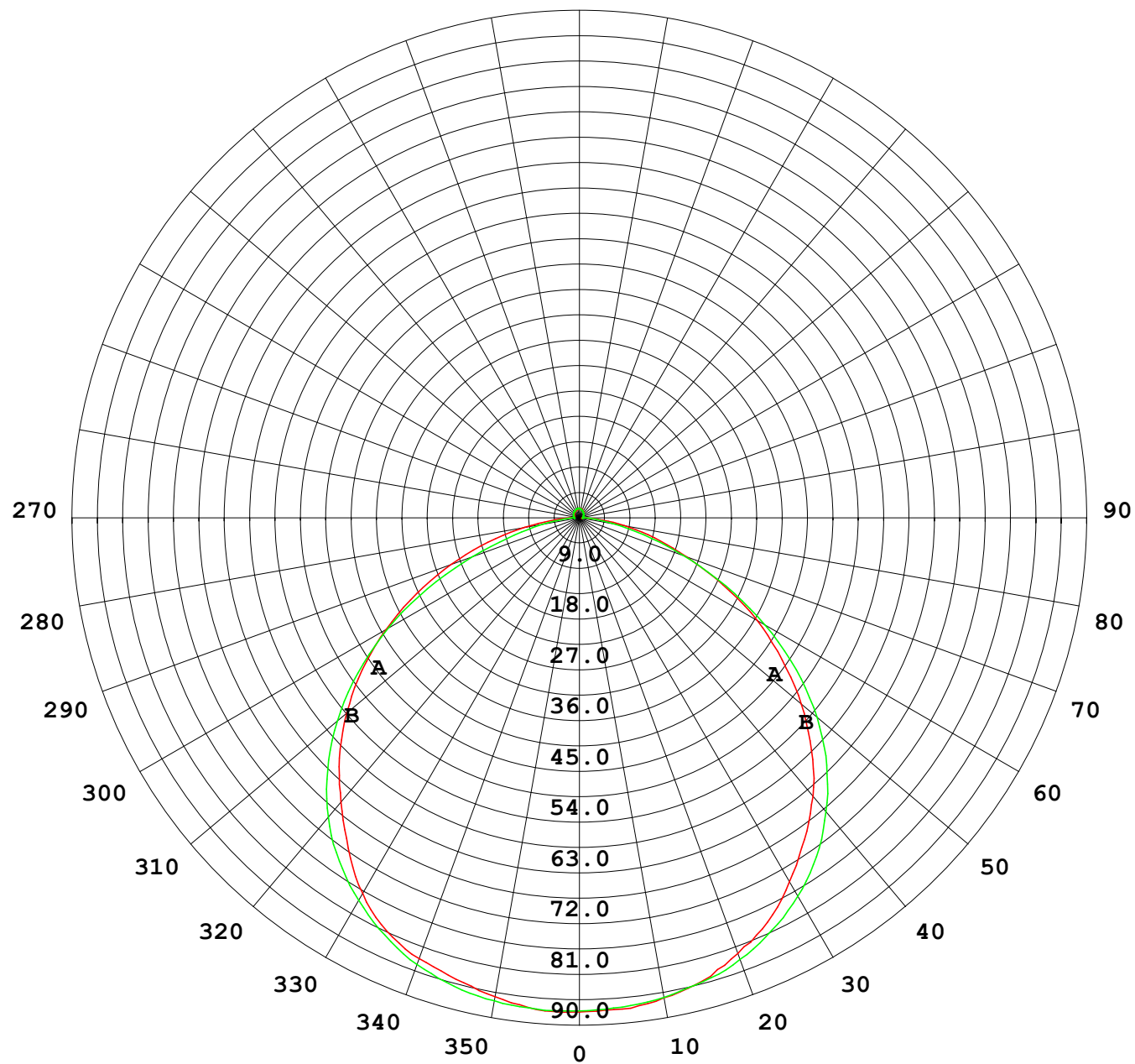
Photometric Data Table [cd]

33.0	74.69	74.81
36.0	72.12	71.69
39.0	69.51	68.20
42.0	66.79	64.38
45.0	63.38	60.62
48.0	59.30	56.60
51.0	54.81	52.73
54.0	50.15	48.83
57.0	44.90	44.40
60.0	39.50	40.11
63.0	33.96	35.28
66.0	28.57	30.69
69.0	23.67	26.00
72.0	19.13	21.24
75.0	14.84	16.56
78.0	10.91	12.39
81.0	7.350	8.355
84.0	4.290	4.991
87.0	1.982	2.410
90.0	0.6636	0.9651
93.0	0.5403	0.5822
96.0	0.5682	0.5333
99.0	0.6097	0.5264
102.0	0.6512	0.5264
105.0	0.6927	0.5540
108.0	0.7342	0.6025
111.0	0.7828	0.6440
114.0	0.8243	0.7267
117.0	0.8728	0.7340
120.0	0.9006	0.7824
123.0	0.9491	0.8310
126.0	0.9906	0.8725
129.0	1.039	0.9349
132.0	1.081	0.9695
135.0	1.136	1.052
138.0	1.171	1.080
141.0	1.219	1.177
144.0	1.268	1.184
147.0	1.330	1.267
150.0	1.378	1.295
153.0	1.434	1.343
156.0	1.482	1.392
159.0	1.524	1.433
162.0	1.579	1.496
165.0	1.621	1.523
168.0	1.648	1.558
171.0	1.683	1.600
174.0	1.704	1.621
177.0	1.725	1.641
180.0	1.738	1.683

C Range: 0 - 360DEG
C Interval: 30.0DEG
Test Speed: HIGH
Temperature:25.3DEG
Operators:WFW
Test Date:2022-12-15

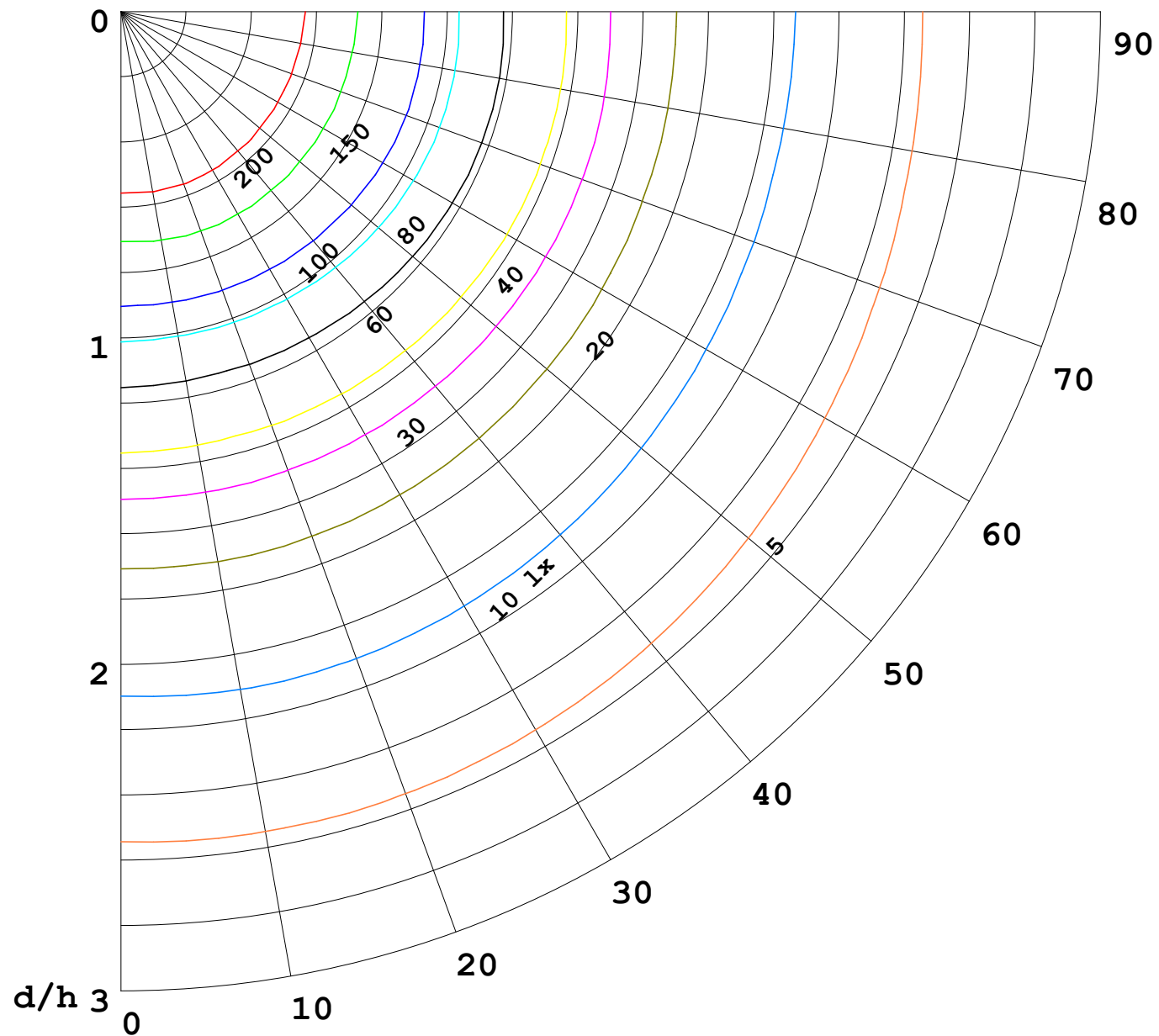
γ Range: 0 - 180DEG
γ Interval: 1.0DEG
Test System:EVERFINE GO-2000B_V1 SYSTEM V2.0.269
Humidity:65.0%
Test Distance:10.800m [K=1.0000]
Remarks:

I (cd)



1000 lm

$\kappa = 1$



F = 5000 lm
 K = 0.7
 Hcc = 0.0 m
 Hfc = 0.0 m
 Eave = 100 lx

	Pcc	Pw	Pfc
—	70	50	30
—	50	30	20

